

Waterfowl Banding

Kayla Harvey

Delaware Division of Fish & Wildlife

*We Bring You Delaware's Great Outdoors
through Science and Service*



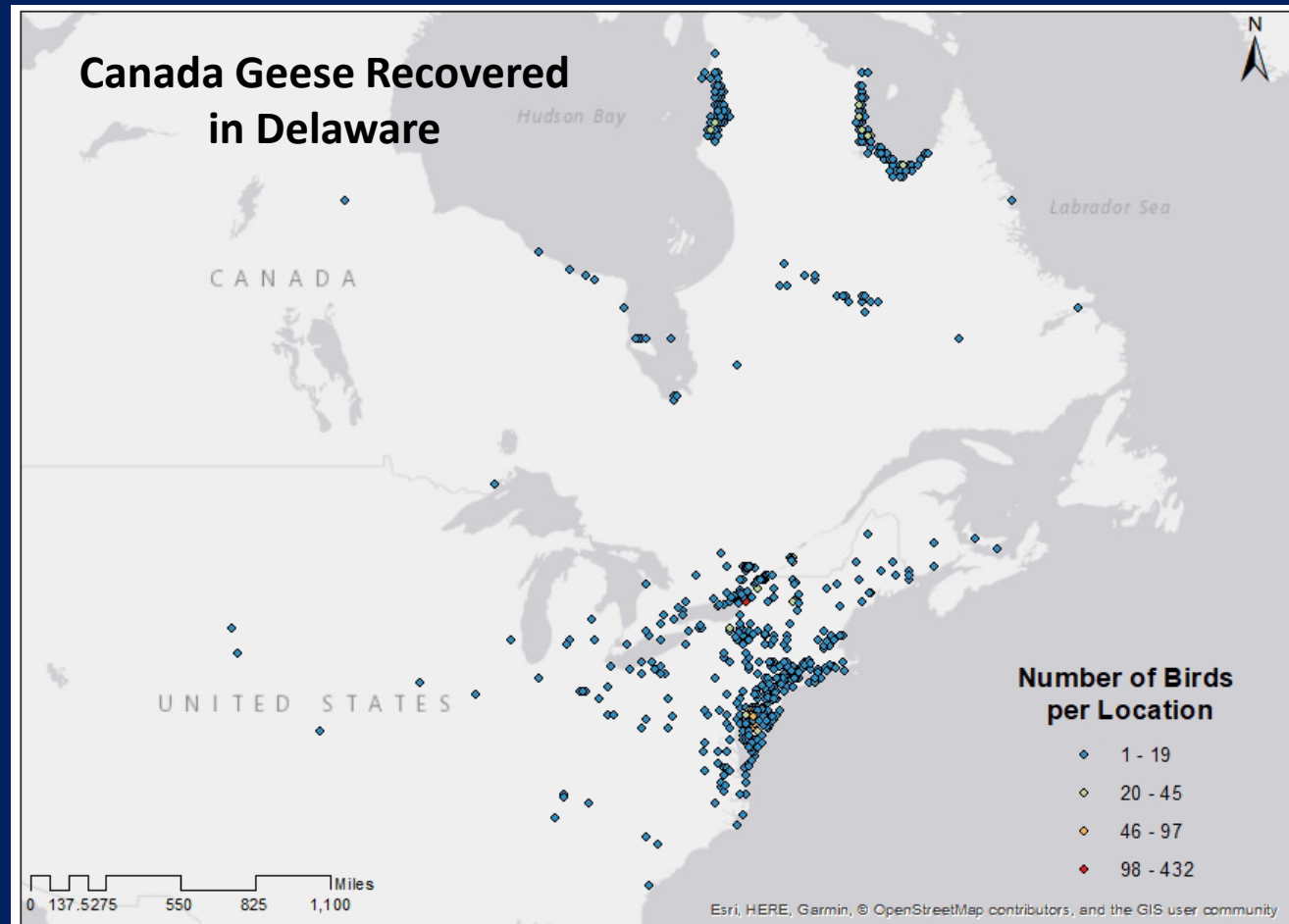
Banding waterfowl

- Aluminum metal bands
- Unique ID number
- www.reportband.gov



Why band waterfowl?

- Track Migration





Why band waterfowl?

- Harvest and survival rates

DUCKS	SEASON DATES	DAILY BAG LIMIT	POSSESSION LIMIT
Ducks (Regular Season)	Oct 25 - Nov 6	6	18
	Nov 25 - Nov. 30		
	Dec 13 - Jan 31		
September Teal	Sep 12 - Sep 30	6	18
Limited to the designated teal zone south of the C & D Canal to Lewes, and east of Routes 13, 113/113A, and 1. Bag limit may include any combination of blue-winged and/or green-winged teal			
Youth Waterfowl Hunt Youth must be age 10-15.	Oct 19 & Feb 8		
Daily bag limits as listed below apply for ducks, mergansers, coots, moorhens, gallinules, Canada geese, snow geese, grant, and swans. Limits are described by each species.			
Daily Bag Limits and Possession Limits			
The daily limit of 6 ducks (excluding mergansers and coots) may include, in any combination, up to: 2 mallards of which, no more than 1 may be a hen; 2 black ducks; 1 pintail; 2 canvasback, 3 wood ducks; 2 redheads; 2 scaup, 6 teal; 6 shovellers; 6 gadwall; 6 wigeon; 6 goldeneye; 6 ring-necked ducks; 6 bufflehead; 6 ruddy ducks; 1 mottled duck; 1 fulvous whistling-duck; 4 scoters; 4 elders; 4 long-tailed ducks. The possession limit is 3 times the daily limit. The season on harlequin ducks remains closed.			
Sea Ducks Scoters, Elders, and Long-tailed ducks	Nov 23 - Jan 31*	5**	15**
* Season dates apply to Special Sea Duck Area where ducks may be taken not less than 800 yards (1/2) mile seaward from the Delaware Bay shore or the Atlantic Ocean shore beginning at an east-west line between Port Mahon and the Elbow Cross Navigation Light, south to the Delaware-Maryland line. The shooting of crippled sea ducks from a motorboat under power will be permitted in the designated sea duck hunting area. Sea ducks may be harvested within the designated Special Sea Duck Area only during the Sea Duck Season. Sea ducks may be taken outside of the Special Sea Duck Area only during the regular duck season and are part of the regular duck season bag and possession limits.			
** The daily bag limit for sea ducks to include no more than 4 scoters, 4 long-tailed ducks, or 4 elders. Within the Special Sea Duck Area, during the regular duck season, the sea duck limit may be in addition to limits for other ducks during the regular duck season. The season on harlequin ducks remains closed.			
COOT	Same as Duck Season	15	45
MERGANSERS**	Same as Duck Season	5	15
** Daily bag limit may include no more than 2 hooded mergansers (6 in possession)			

How do we band waterfowl?

- Swim-in traps
- Rocket nets
- Night-lighting



Auxiliary markers

- Neck bands or colored leg bands



Auxiliary markers

- Transmitters



Auxiliary markers

- Reward bands



Auxiliary markers

- Web tags



What species do we band?

- Pre-season



Why band wood ducks?

- **No surveys over their whole breeding range**
 - Difficult to count them from the air
- **Potential biological removal**
 - Estimates maximum rate of removal (kill rate)
- **Banding and recoveries are used to estimate the kill rate**
 - Monitor if we are within the allowable levels

What species do we band?



- Post-season

Why Band Black Ducks?

- **International Black Duck Harvest Strategy**
- **Survival Rates**
 - **See how changes in the harvest rates affect changes in survival**
- **Pre- and post-season banding**

But...we band any duck that we trap



Wood duck box nest monitoring



Wood duck box nest monitoring



Contributions to research:

- Migration
- Harvest/Survival Rates
- Age Ratios
- Sex ratios
- Life-span
- Population estimates
- And much more!



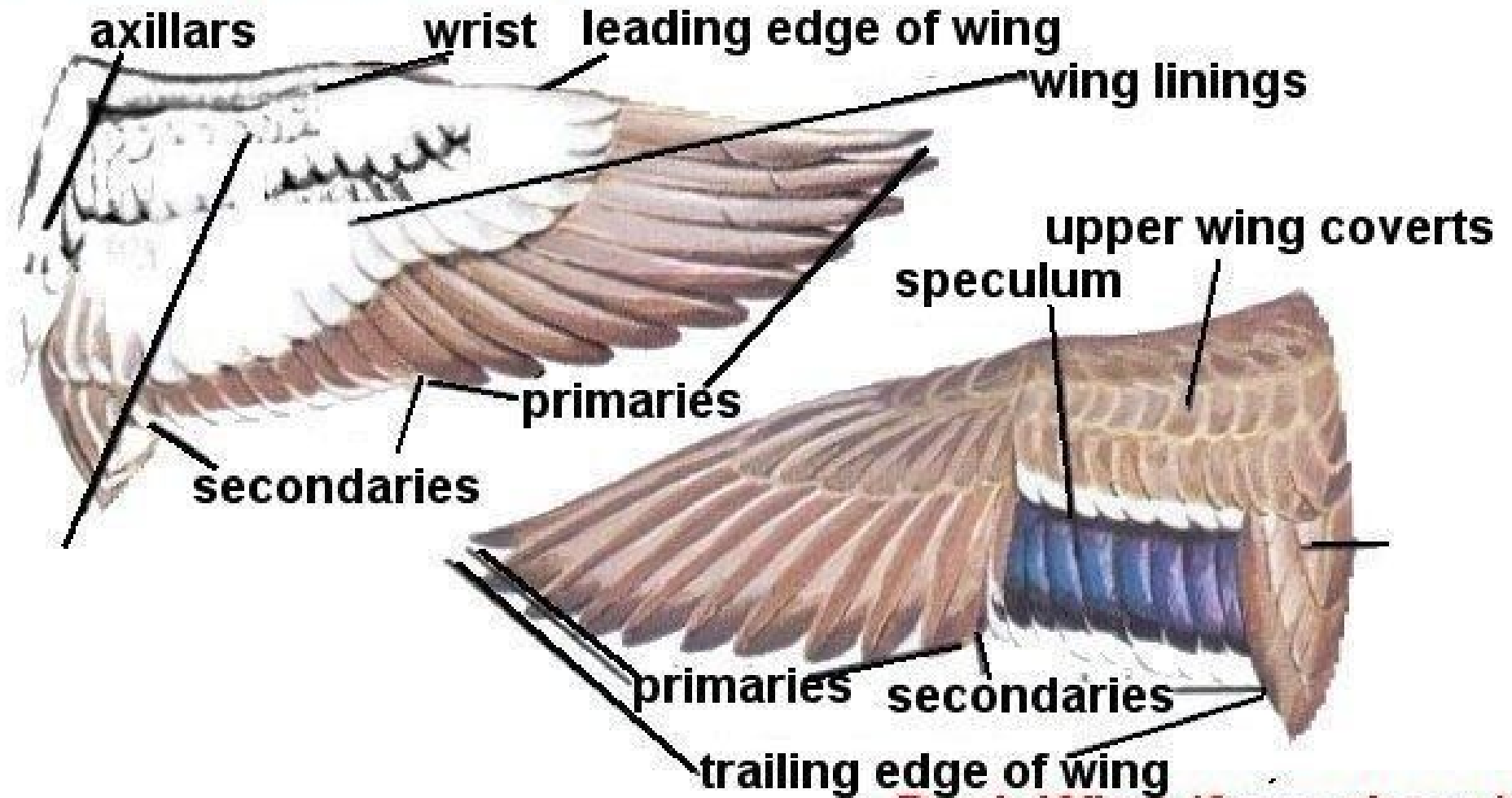
Wing ID

Why wing ID is important...

- Banding
- Wingbee

Parts of a Wing

Duck Wing (from below)



Duck Wing (from above)

Juvenile vs. Adult feathers

Adult: broad and round tipped, no wear

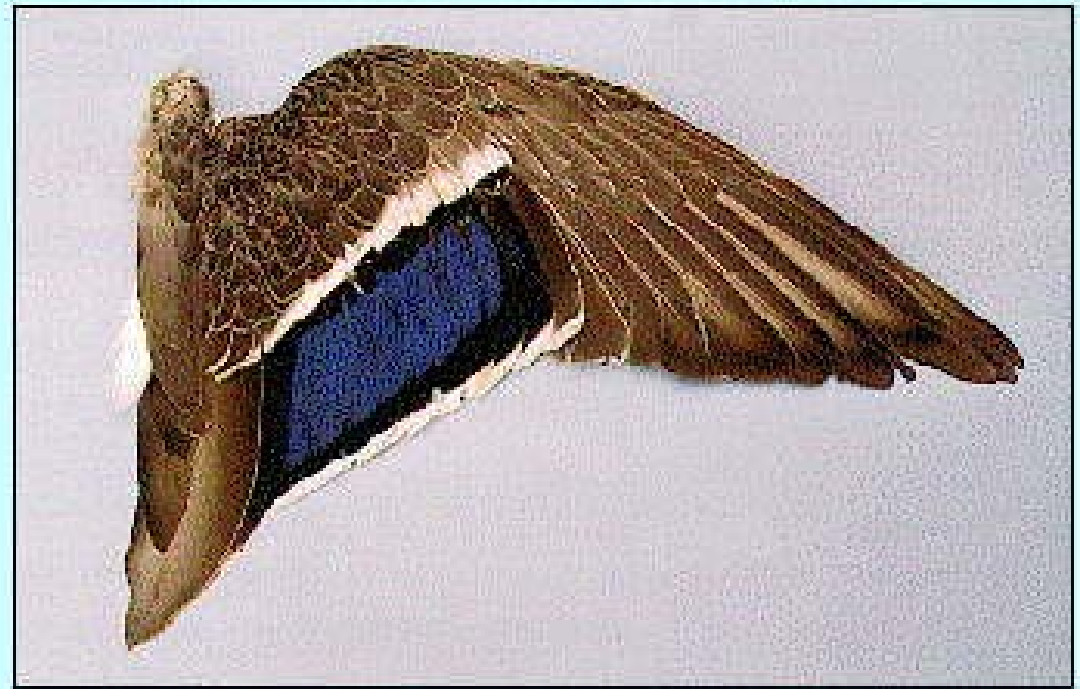


Juvenile: overall “pointier”, thinner, more frayed and worn





Adult male mallard



Adult female mallard with edged coverts



Adult male black duck



Canada geese

- Adults: black, rounded wing tips
- Juvenile: notched tail feathers and/or pointy wing tips that are brownish and worn

Questions?

